

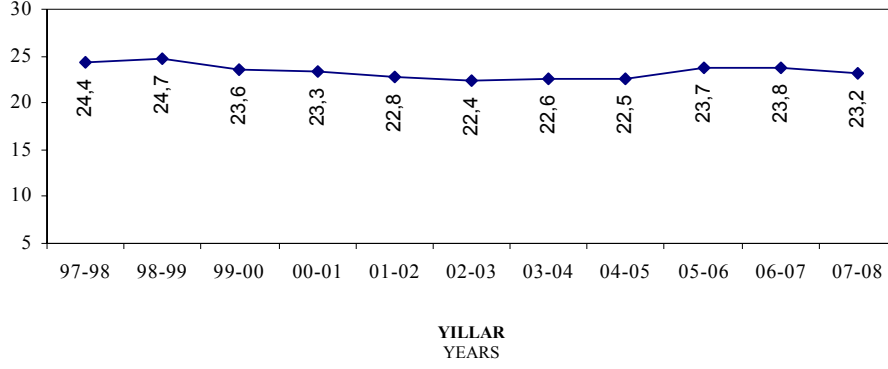
***-III-***

***Öğrenci/Öğretim Elemanı  
Oranları***

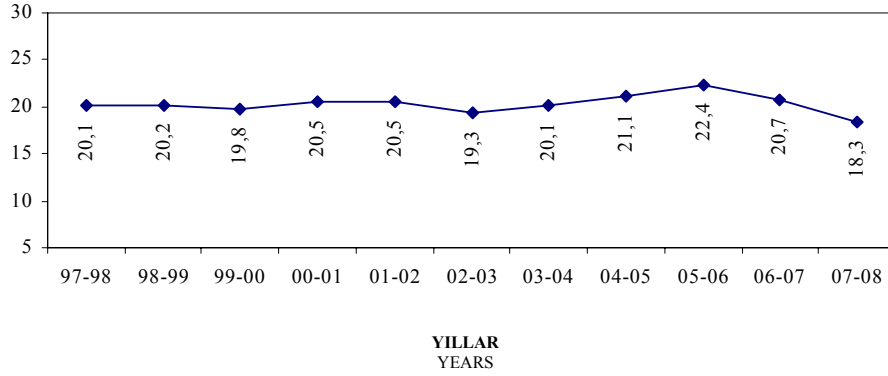
*Students/Faculty Member Ratios*



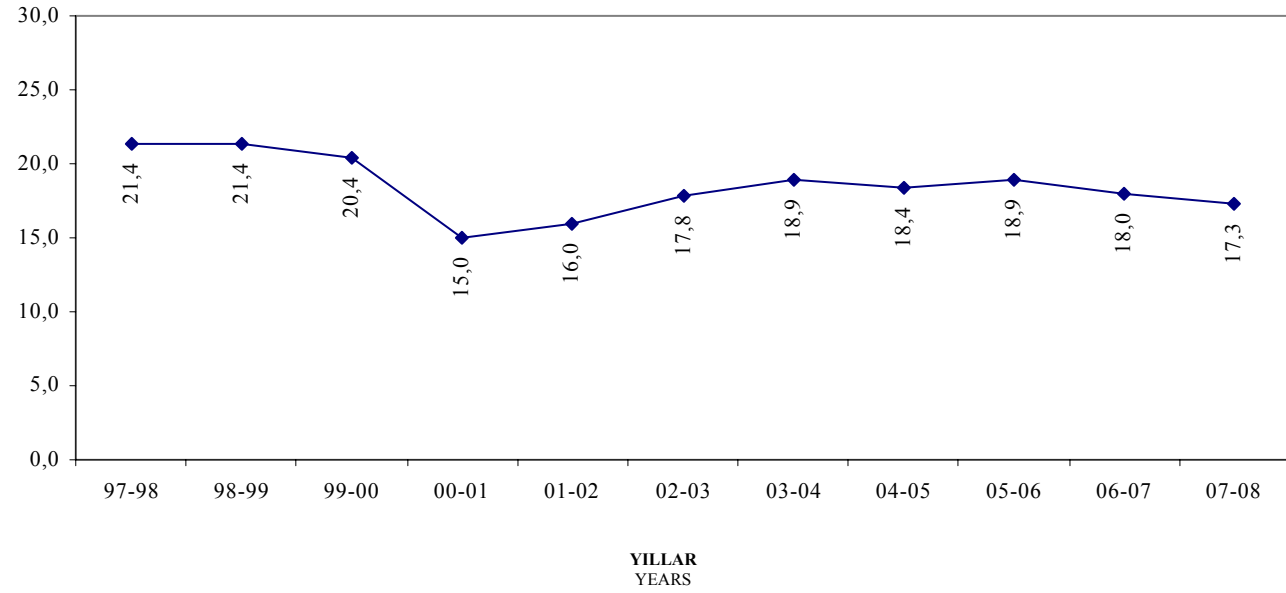
**ŞEKİL 15** : **ÖĞRENCİ (Hazırlık + OMY Hariç)** **Oranı**  
**TAM ZAMANLI ÖĞRETİM ÜYESİ**  
 Ratio of Students to Full-Time Faculty Members  
 (Excluding English Prep. School, Vocational School of  
 Hotel Management)



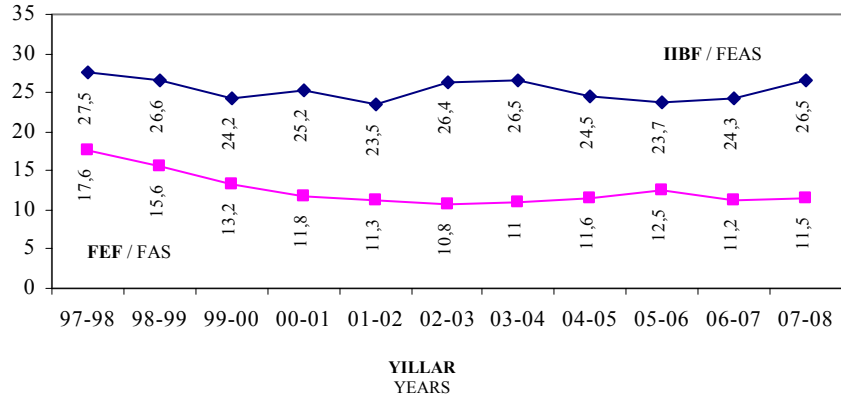
**ŞEKİL 16** : **ÖĞRENCİ (Hazırlık + OMY Hariç)** **Oranı**  
**TAM ZAMANLI ÖĞRETİM ÜYE VE GÖREVLİSİ**  
**(Hazırlık Sınıfı + OMY Hariç)**  
 Ratio of Students to Full-Time Academic Staff,  
 (Excluding English Prep. School, Vocational School of  
 Hotel Management)



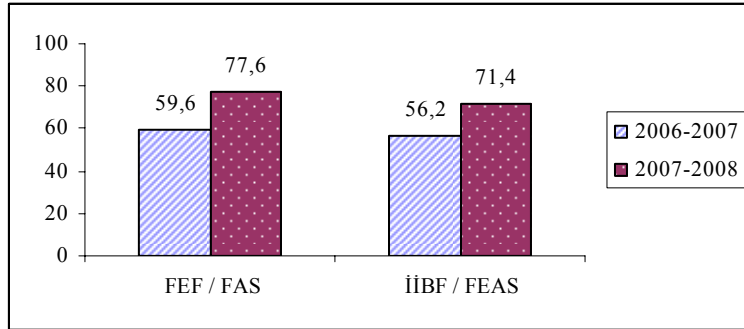
**ŞEKİL 17** : **LİSANS ÖĞRENCİ SAYISI (Hazırlık Hariç)** **Oran**  
**TAM ZAMANLI ÖĞRETİM ÜYE VE GÖREVLİSİ**  
**(Fakültelerde Görevli)**  
 Ratio of Undergraduate Students to Full-Time Academic Staff in the Faculties  
 (Including Instructors) (Excluding English Prep. School)



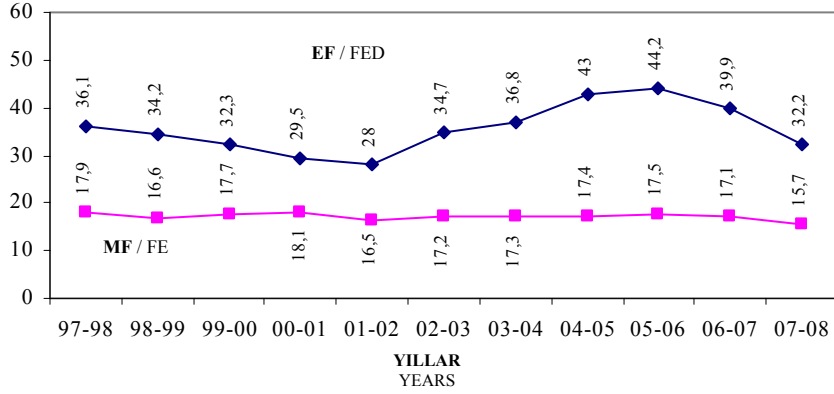
**ŞEKİL 18a** : **FAKÜLTELER BAZINDA ÖĞRENCİ SAYISI (Haz. Hariç)** **Oranı**  
**FAKÜLTELERDE GÖREVLİ TAM ZAMANLI ÖĞRETİM ÜYE VE GÖREVLİSİ**  
 Ratio of Undergraduate Students to Full-Time Academic Faculty Members (Including Instructors) in the Faculty of Economics and Administrative Sciences and the Faculty of Arts and Sciences (Excluding English Prep. School Students)



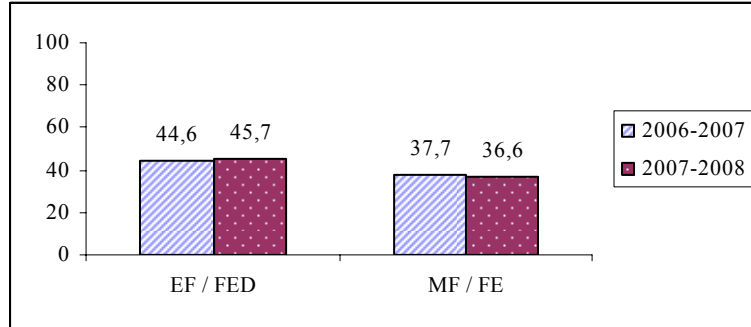
**ŞEKİL 18b** : **FAKÜLTELER BAZINDA ÖĞRENCİ SAYISI (Servis Dersi Öğrencisi Dahil)** **Oranı**  
**FAKÜLTELERDE GÖREVLİ TAM ZAMANLI, SÖZLEŞMELİ, DERS GÖREVLİ ÖĞRETİM ÜYE VE GÖREVLİSİ**  
 Ratio of Undergraduate Students to Academic Staff in the Faculty of Economics and Administrative Sciences and the Faculty of Arts and Sciences (Including Services Students)



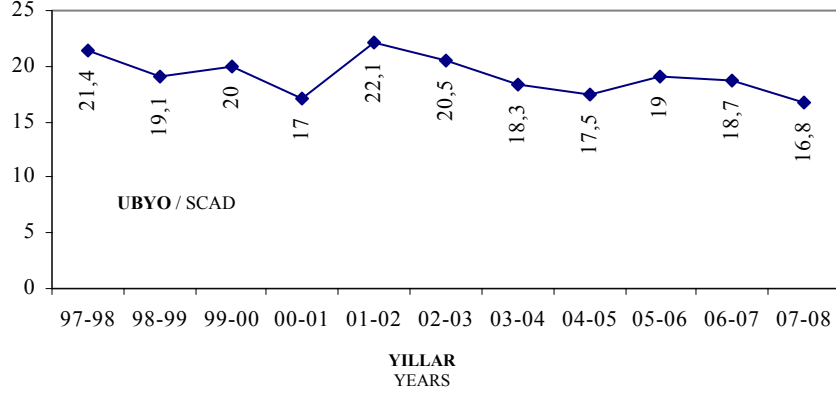
**ŞEKİL 19a** : **FAKÜLTELER BAZINDA ÖĞRENCİ SAYISI (Haz. Hariç)** **Oranı**  
**FAKÜLTELERDE GÖREVLİ TAM ZAMANLI ÖĞRETİM ÜYE VE GÖREVLİSİ**  
 Ratio of Undergraduate Students to Full-Time Academic Faculty Members (Including Instructors) in the Faculty of Education and the Faculty of Engineering (Excluding English Prep. School Students)



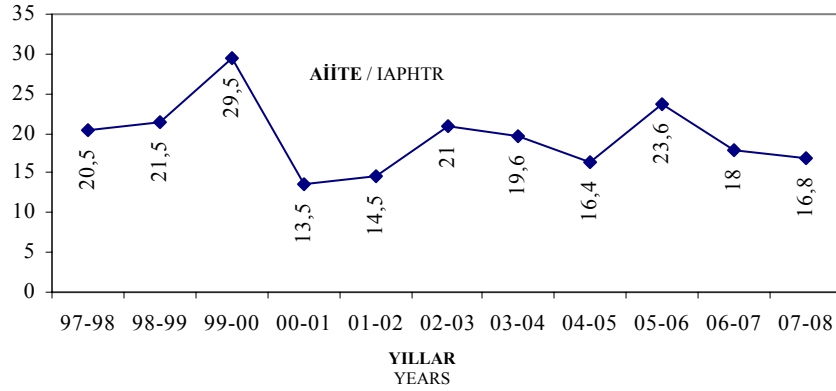
**ŞEKİL 19b** : **FAKÜLTELER BAZINDA ÖĞRENCİ SAYISI** **Oranı**  
**(Servis Dersi Öğrencisi Dahil)**  
**FAKÜLTELERDE GÖREVLİ TAM ZAMANLI, SÖZLEŞMELİ, DERS GÖREVLİ ÖĞRETİM ÜYE VE GÖREVLİSİ**  
 Ratio of Undergraduate Students to Academic Staff in the Faculty of Education and the Faculty of Engineering (Including Services Students)



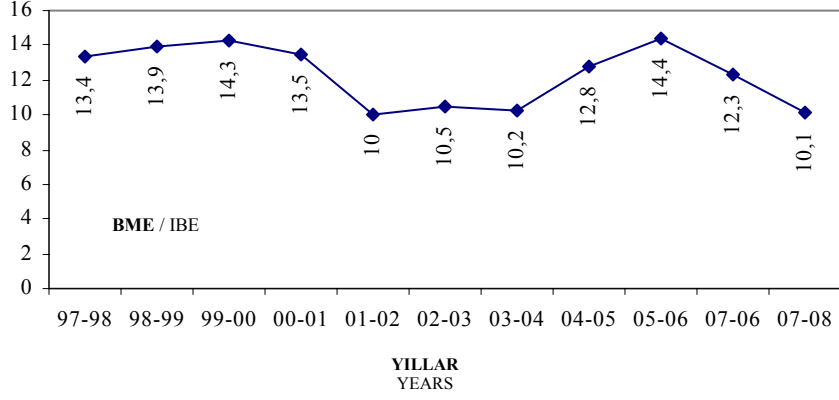
**ŞEKİL 20** : **UBYO ÖĞRENCİ SAYISI (Haz. Hariç)** **Oranı**  
**UBYO'DA GÖREVLİ TAM ZAMANLI**  
**ÖĞRETİM ÜYE VE GÖREVLİSİ**  
 Ratio of Undergraduate Students to Full-Time Academic Faculty  
 Members (Including Instructors) in the School of Applied Disciplines  
 Studies (Excluding English Prep. School Students)



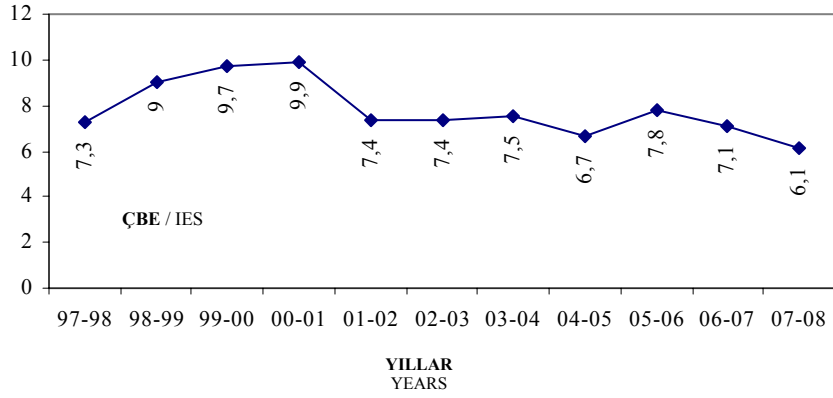
**ŞEKİL 21a** : **ENSTİTÜLER BAZINDA ÖĞRENCİ SAYISI (Haz. Hariç)** **Oranı**  
**ENSTİTÜLERDE GÖREVLİ TAM ZAMANLI**  
**ÖĞRETİM ÜYE VE GÖREVLİSİ**  
 Ratio of Graduate Students to Full-Time Faculty Members (Including  
 Instructors) in the Institute of Atatürk's Principles and History of  
 Turkish Renovation (Excluding English Prep. School Students)



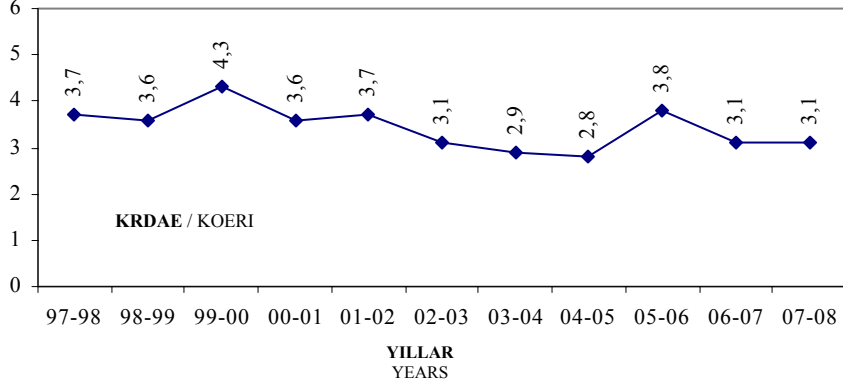
**ŞEKİL 21b** :  $\frac{\text{ENSTİTÜLER BAZINDA ÖĞRENCİ SAYISI (Haz. Hariç)}}{\text{ENSTİTÜLERDE GÖREVLİ TAM ZAMANLI ÖĞRETİM ÜYE VE GÖREVLİSİ}}$  Oranı  
 Ratio of Graduate Students to Full-Time Academic Faculty Members (Including Instructors) in the Institute of Biomedical Engineering (Excluding English Prep. School Students)



**ŞEKİL 21c** :  $\frac{\text{ENSTİTÜLER BAZINDA ÖĞRENCİ SAYISI (Haz. Hariç)}}{\text{ENSTİTÜLERDE GÖREVLİ TAM ZAMANLI ÖĞRETİM ÜYE VE GÖREVLİSİ}}$  Oranı  
 Ratio of Graduate Students to Full-Time Academic Faculty Members (Including Instructors) in the Institute of Environmental Sciences (Excluding English Prep. School Students)



**ŞEKİL 21d** : **ENSTİTÜLER BAZINDA ÖĞRENCİ SAYISI (Haz. Hariç)** Oranı  
**ENSTİTÜLERDE GÖREVLİ TAM ZAMANLI ÖĞRETİM ÜYE VE GÖREVLİSİ**  
 Ratio of Graduate Students to Full-Time Academic Faculty Members  
 (Including Instructors) in the Kandilli Observatory and Earthquake  
 Research Institute (Excluding English Prep. School Students)



**ŞEKİL 22** : **HAZIRLIK SINIFI ÖĞRENCİ SAYISI** Oranı  
**HAZIRLIK SINIFINDA DERS VEREN TAM ZAMANLI ÖĞRETİM ELEMANI**  
 Ratio of Students in English Prep. School to Full-Time  
 Teaching Staff in the School

